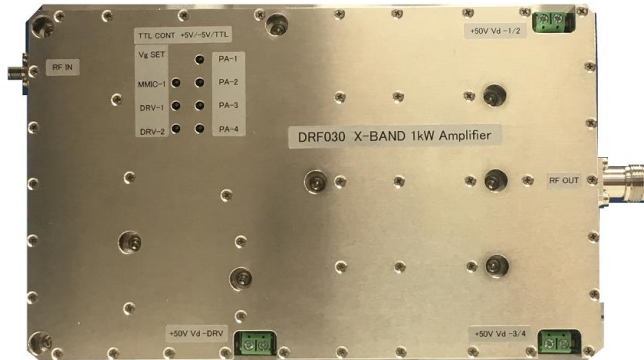


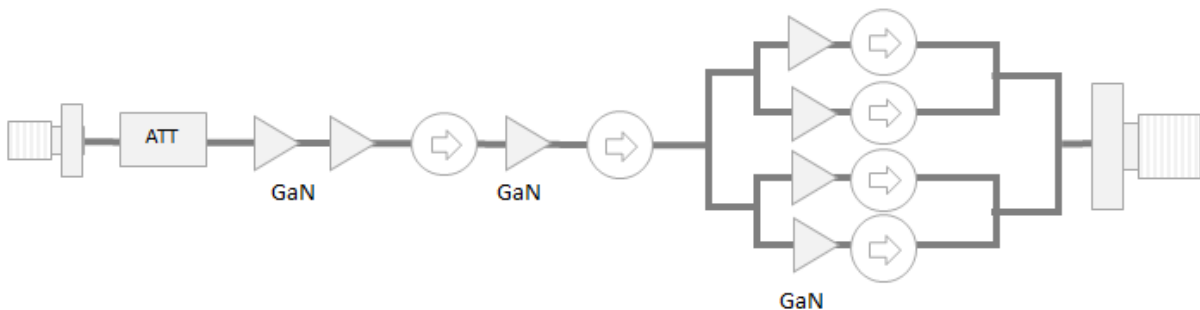
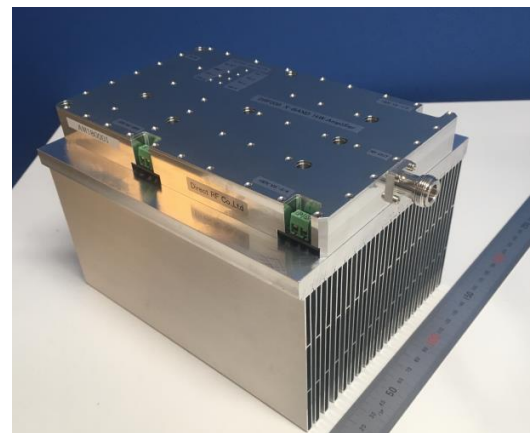
X-Band 1KW GaN Pulse Power Amplifier



Features

Small size
High Efficiency

Frequency 9.3 to 9.5 GHz
 Psat 1KW (10% duty)
 Gain 50dB
 ON/OFF control TTL
 Connectors SMA-F input
 N-F output
 DC volts +50V/+5V
 Size 200 x 124 x 22 mm
 (without heatsink)



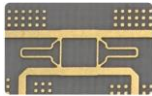
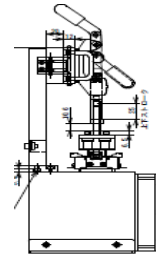
CUSTOM DESIGNS

Direct RF is able to design RF modules to suit your specific package and application.

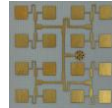
Products

28GHz 20W solid state power devices Test Fixture for Production / Engineering

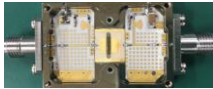
Frequency range 27 – 31GHz
 RF Power 20W
 K-connectors
 Forced air Cooling
 Copper material



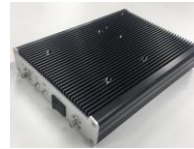
28GHz Coupler



5G+ MIMO Antenna



10GHz
70W Amplifier

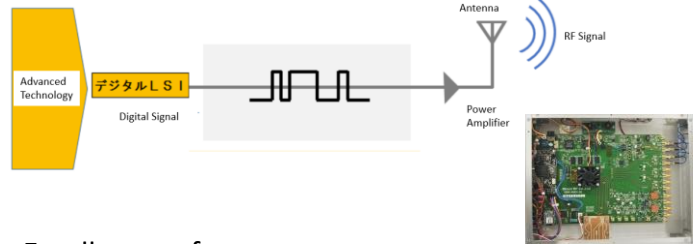


2.4GHz to 5GHz
Upconverter

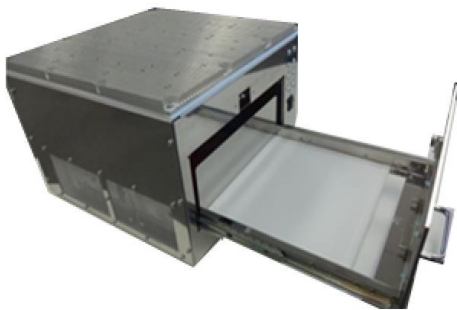


S-band/C-band
Tx/Rx Module
10W Doherty PA

1-Bit Digital Radio System



Compact 40MHz Thawing



- Excellent performance
- High Efficiency
- Less Drops
- Optimizing Antenna matching



Company

Established	Nov 2013
CEO & President	Kazuyuki Totani
Business	Design, Manufacture RF/mmWave Circuit/ Module/Equipment, Software Radio(1bit), Thawing Equipment and Consulting
Location	Koyochonaka Higashinada-Ku, Kobe Japan